

ASHTON BIRD
ARCHITECTURAL DESIGN & FINE ART

**The Ritz-Carlton
Cigar Club**

St. Louis, Missouri, US
2020-2022

The Johnson Studio at
Cooper Carry
191 Peachtree Tower,
Atlanta, GA, US 30303

The Ritz-Carlton Cigar Club lighting is meant to impress, set the mood for romance or offer some private time to decompress. The lighting adds richness to the dark lacquers, leathers and woods.

Note: I was 1 of 2 internal
lead lighting designers for this
project at The Johnson Studio.







Amelia Gene's

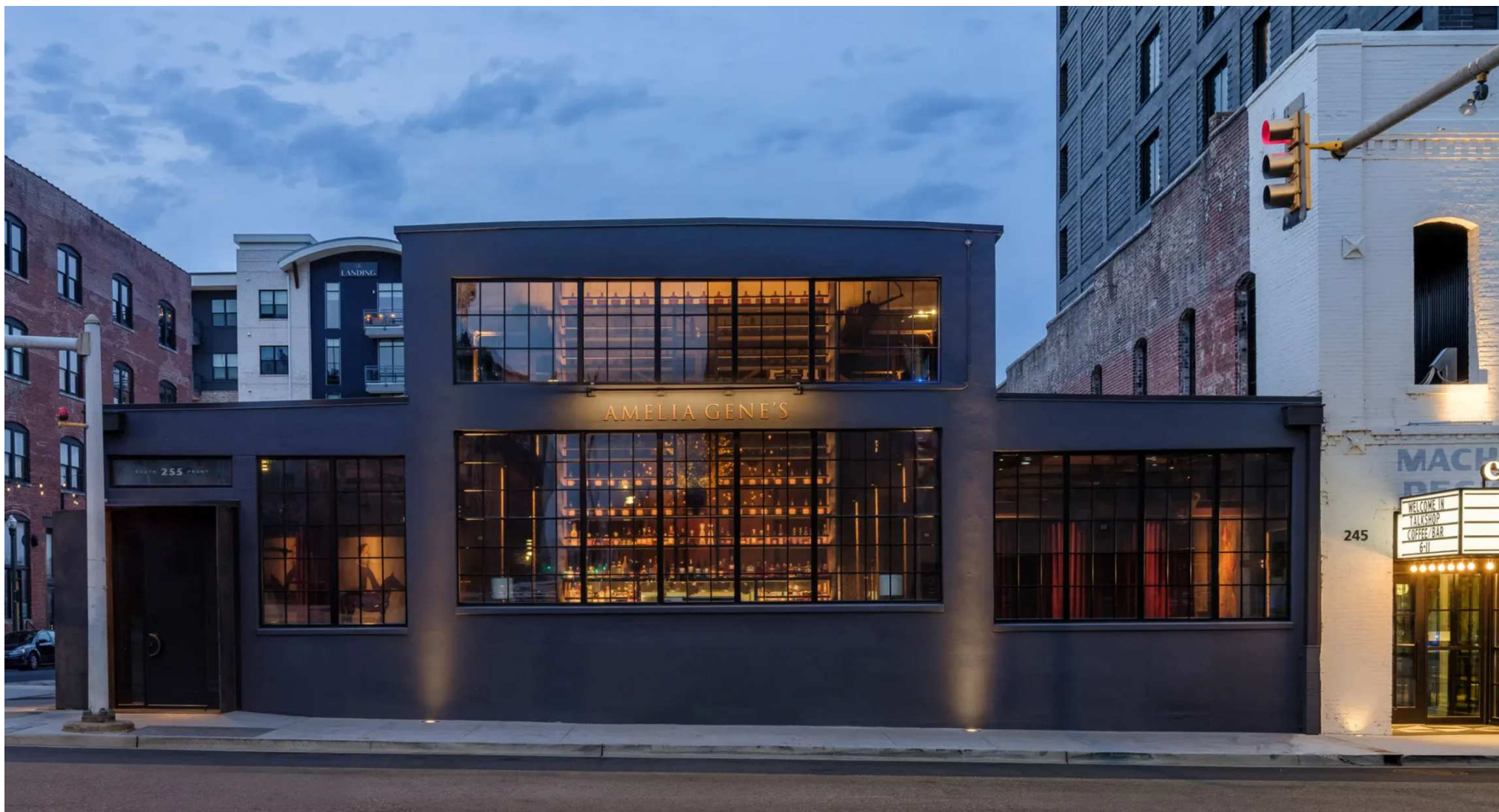
Memphis, Tennessee, US
2020-2023

The Johnson Studio at
Cooper Carry
191 Peachtree Tower,
Atlanta, GA, US 30303

Housed in a former 19th-century industrial building, Amelia Gene's layers raw concrete, exposed brick, and original machinery with rich velvets, warm woods, and dramatic lighting. The goal was to create a moody yet inviting setting that feels both historic and luxurious. Lighting played a central role in shaping this contrast, softening the grit of the architecture while enhancing the intimacy of the dining experience.

Note: I was 1 of 2 internal lead lighting designers for this project at The Johnson Studio.









Rumi's – Colony Square
Atlanta, Georgia, US
2020-2023

The Johnson Studio at
Cooper Carry
191 Peachtree Tower,
Atlanta, GA, US 30303

A modern interpretation of Persian tradition, Rumi's – Colony Square blends cultural elegance with architectural sophistication. Inspired by the movement of whirling dervishes, intricate calligraphy, and rustic textures, the lighting enhances layered materials and bold color palettes—rich golds, deep blues, and natural greens. The design balances intimacy and openness, from the glow of the fireplace to the airy vibrance of the outdoor patio.

Note: I was 1 of 2 internal lead lighting designers for this project at The Johnson Studio.









Bouquet & Checker Columns

wood, discarded faux flowers,
curtain, cloth canvas, foam
board, acrylic paint, pastels
5.5m x 4.5m x 4m, variable
2023

PRELUDE POP UP

LOFT BUBNY

U Papírny 100/2

Praha 7, Holešovice

Prague, Czech Republic

An abstracted bouquet delicately perched on checker-patterned columns, this work explores empathy, fragility, beauty, and love as necessary tools to confront the past and move through the present. The checker motif becomes a metaphor for rigid political structures—immobile systems that prop up, yet constrain, the delicacy of human emotion and lived experience. The composition resists polish, embracing mess as a form of honesty. My artistic practice engages the architecture of mental and physical spaces through assemblage, material tension, and constructed forms.









cement & paper tigers

Klauzál6 Project Space,
Budapest, Hungary
2023

Solo Exhibition, 1 Month
International Residency,
Municipality of Budapest,
Hungary

A body of work exploring the illusion of luxury, cultural psychology, and the politics of human wellness. Through layered drawings, textural paintings, and an ephemeral installation, this exhibition examines how systems of governance shape perception, consumption, and material reality. Politics is approached as a force akin to physics—omnipresent, structuring even the most intimate parts of life.

The work asks: how much agency do we hold in a world already shaped for us? And how can we intervene in a predetermined reality to reimagine our place within it?







